



IT'S MUCH LESS
EXPENSIVE
TO DO THINGS
RIGHT
THAN IT IS TO
DO THINGS
OVER.



WATCO



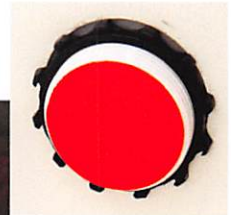
Useful. Innovation.

Watco 901 Innovator[®] Half Kit



The Watco workhorse. Self-aligning, no leaks.

- Extends into tub through overflow; tightens securely with retainer nut
- Overflow ell is self-centering, self-aligning and won't slip
- Eliminates costly behind-tub leaks
- Includes drain test plug and overflow test membrane; testable up to five floors (22 psi)
- No tools required
- Available in PVC and ABS



Overflow test membrane

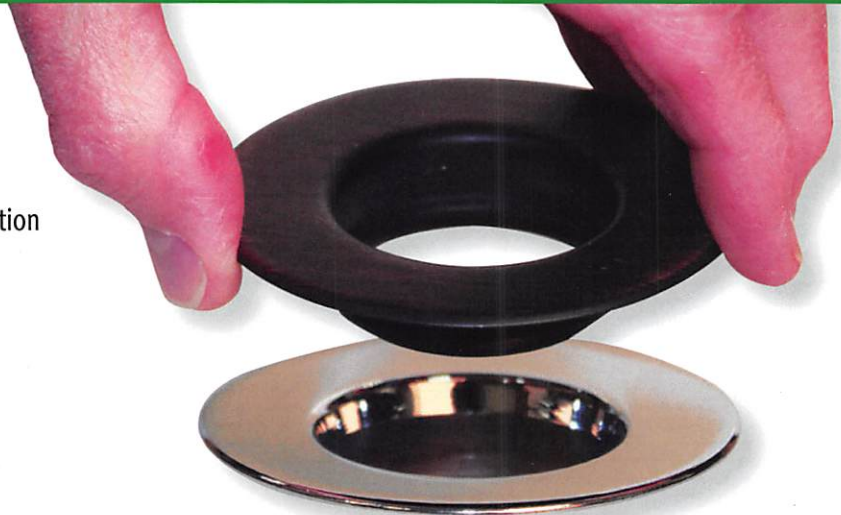
Overflow ell extends through hole



The simplest, easiest way to change finishes.

- Rough-in with our 901 RI, finish in one of 12 QuickTrim[®] designer finishes when you're ready
- Avoid damaging drain finish during construction
- Upgrade to special finish in minutes
- No need to remove bathtub strainer body
 - Fits most bathtub drains

Watco QuickTrim[®]



Rough-in with chrome...



...drop in designer finish and stopper when construction is finished.



WATCO



Useful. Innovation.

We help you do the job right. The first time, every time.

Who hasn't been tempted to save a few dollars on inexpensive bath drain components of dubious quality? The problem is, if those products fail, your "savings" will result in an angry client and expensive callbacks.

You cannot buy more reliable, higher quality, easier-to-install components than Watco. It's been that way since 1970. Everything we make is backed by a five-year warranty...and parts are always available.

Watco assures you of the lowest installed cost over time—the ultimate in savings for the plumbing professional. When your time, your money, and your reputation are on the line, depend on Watco to help you do the job once. And to do the job right.



Watco Flex924

Bye-bye offsets.

- Flexible tubing bends to compensate for misalignment, eliminating offsets and potential leaks
- Tubing can be cut and fit using standard PVC joining techniques
- Includes Innovator® overflow system—self-centering overflow ell extends through overflow hole, eliminating leaks
- Snap-on, easy-clean Innovator® overflow faceplate provides alternative to one- or two-hole overflow faceplates
- Saves time and money—lowest installed cost
- Approvals include UPC, IAPMO, IPC, ASME, CSA

No!



Yes!



MULTI-FAMILY PRODUCTS

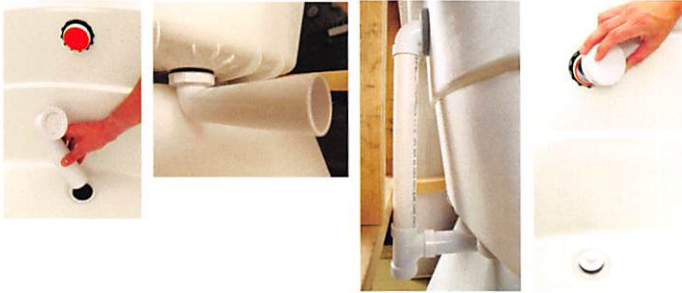
Watco 901N Innovator® Drain



Designer white for less than chrome.

- One person can install in minutes
- Integrated strainer body/drain elbow eliminates one solvent weld joint; fewer joints = fewer problems
- One-piece strainer body/drain elbow installs through tub drain hole; locking nut will not loosen
- Overflow and drain come with test membranes, testable up to five floors (22 psi)
- Standard high-gloss white matches tub
- Easy to change finish with Watco QuickTrim®
- Available in PVC and white ABS

Installs in four easy steps



WatcoFlex®

Installs in minutes!



- Designed for high-volume, multi-family projects
- Specifically sized to the tub
- No measuring, cutting or gluing
- Joints are leakproof; factory welded and tested
- Testable up to five floors (22 psi)
- Available in PVC and ABS
- Approvals include UPC, IAPMO, IPC, ASME, CSA



We have bathtub drains covered.

Useful. Innovation.

816.796.3900 ■ watcomfg.com

Patented and Patents Pending. Visit watcomfg.com for details.

© Watco Manufacturing Company 2015

Construction 6-15 Printed in USA